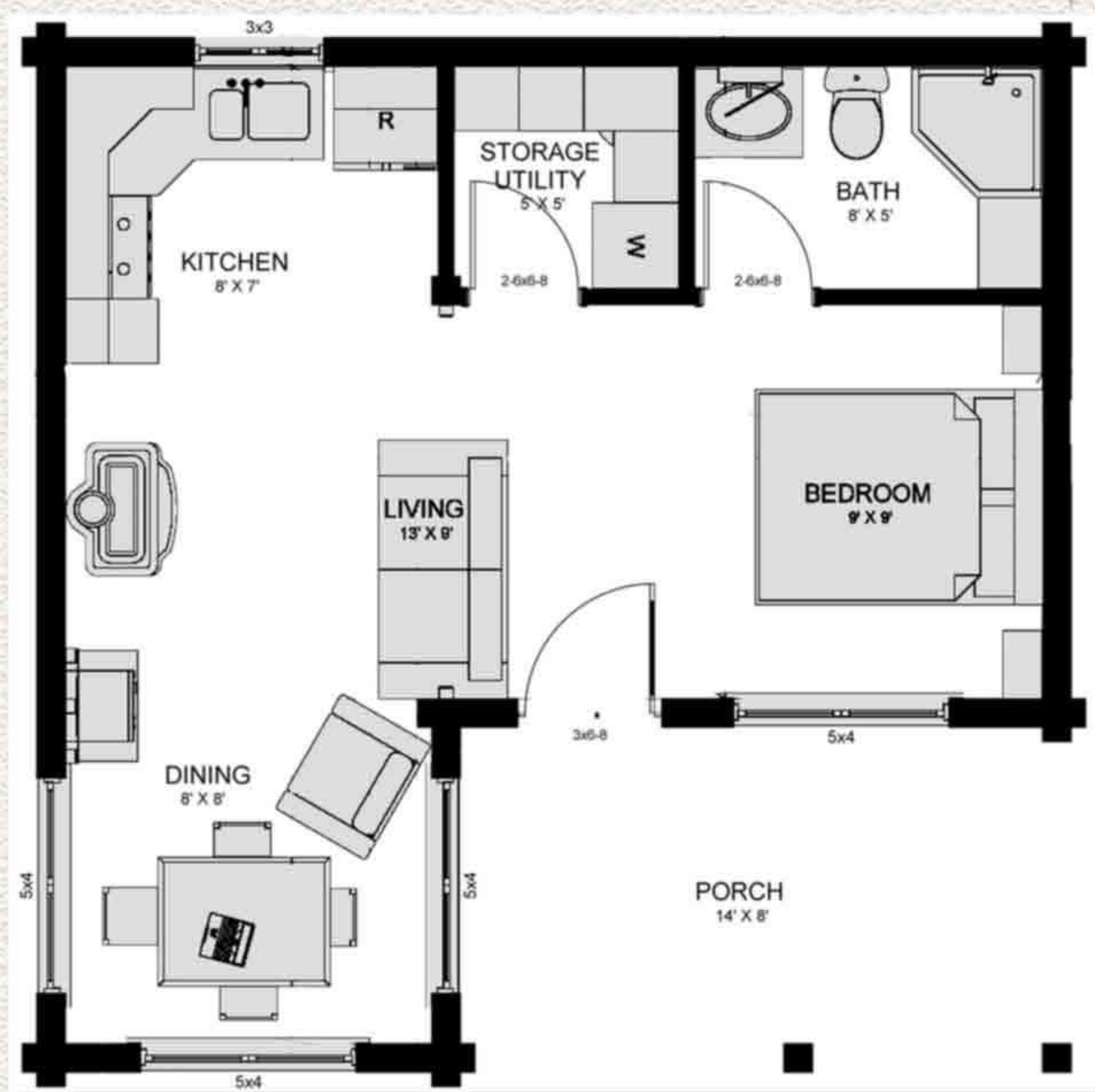


# Wyoming Log Home Manufacturing Company

# Ranch Hand



This two-room cabin has everything you need for a quiet getaway. It features a bedroom and bathroom on one end and a kitchen and livingroom on the other with a storage and utility room separating the areas. This cost effective plan is also perfect for the lodge or property owners who want to have multiple cabins available for guests.



Bedrooms: 1  
Baths: 1



Log Package

### Square Footage

Main Level	462 sq ft
Porches	113 sq ft
<b>Total Usable</b>	<b>575 sq ft</b>

