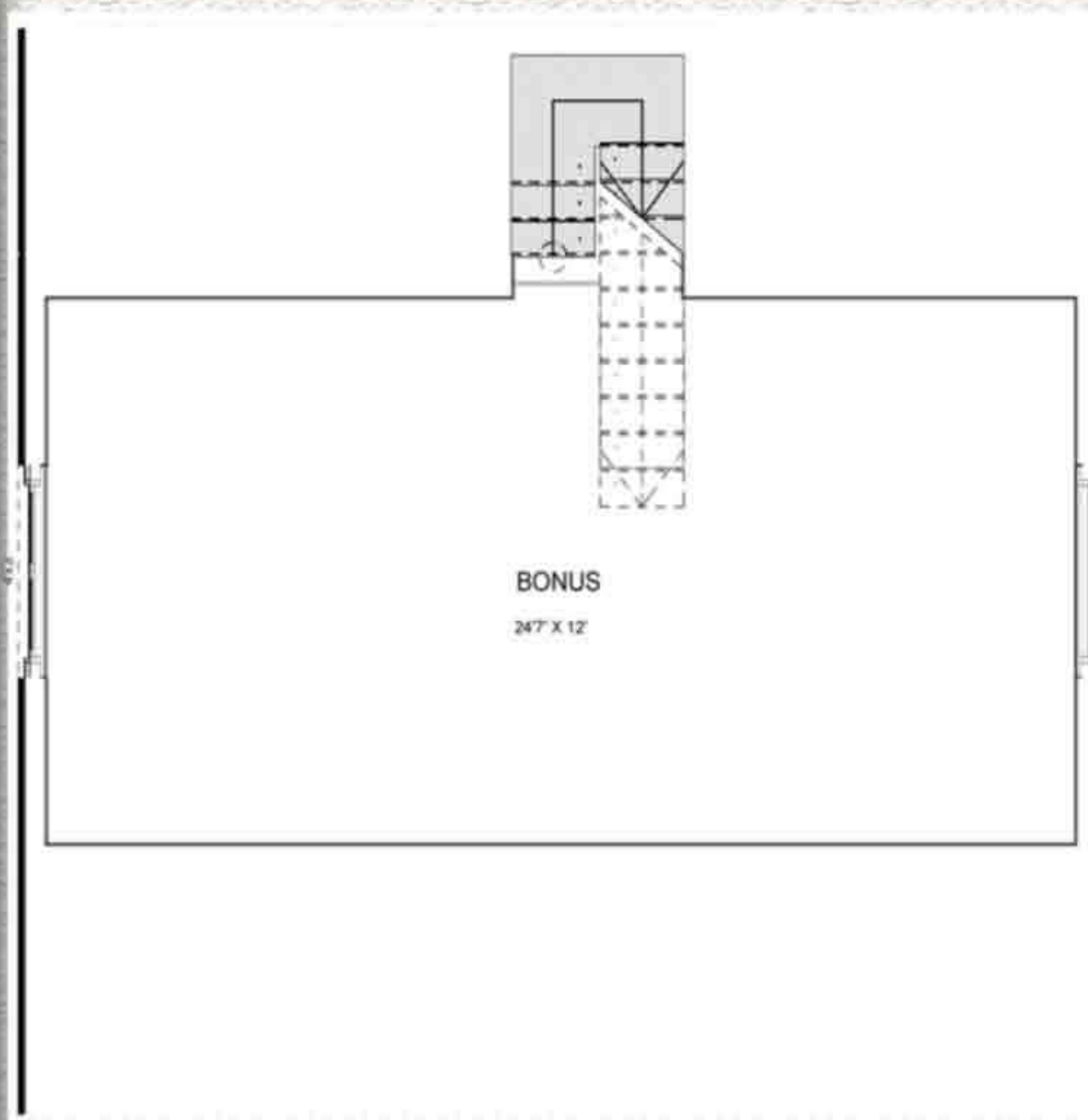


# Wyoming Log Home Manufacturing Company

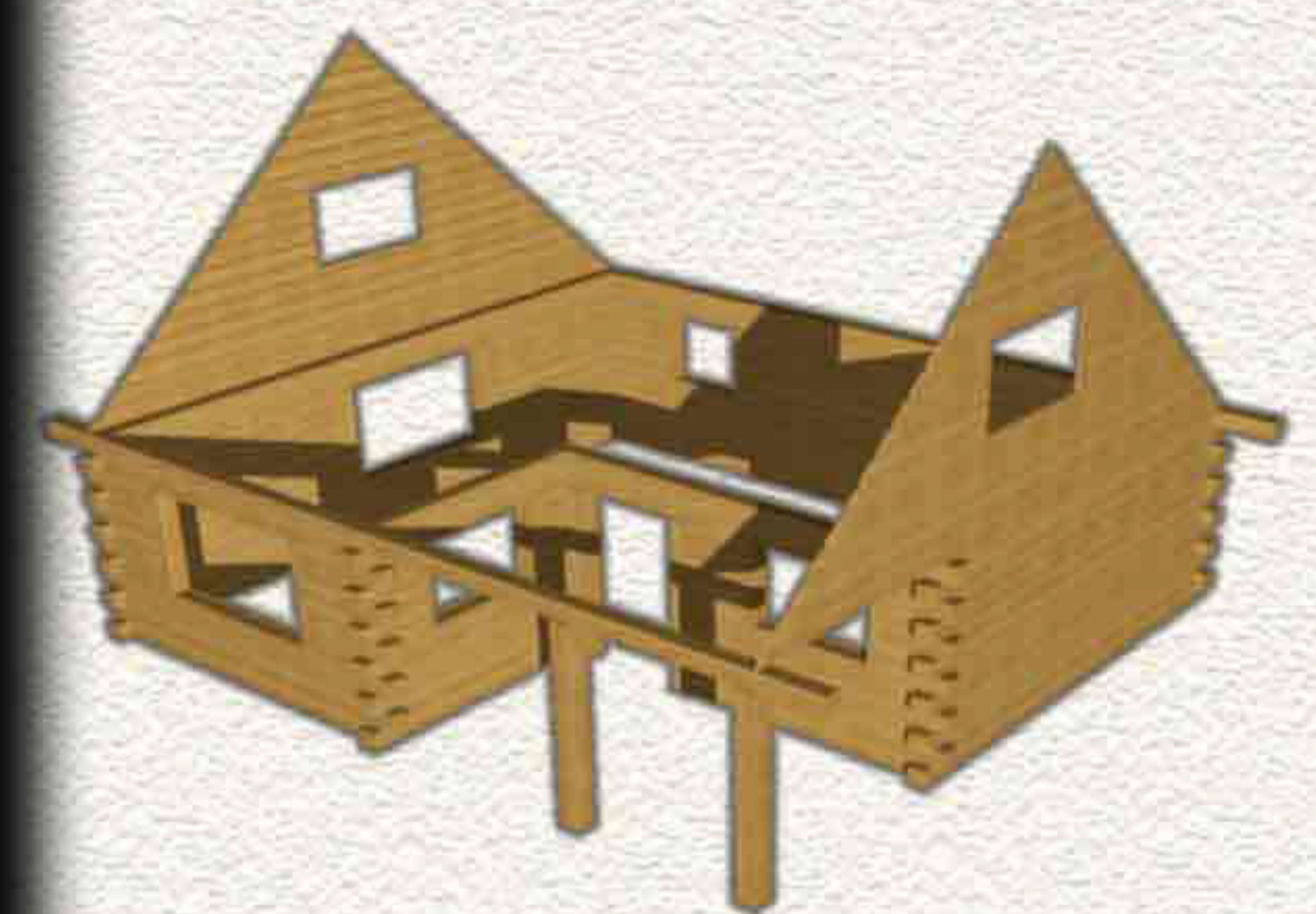
## Mother-In-Law



Designed to provide the most living space for its footprint while having a porch, this cabin features an engineered roof truss system that adds an additional room. The upstairs bonus room can be used as a master bedroom, additional bedroom or a roomy office. This cabin features a main floor bedroom and a common living and kitchen area.



Bedrooms 2  
Baths 1



### Log Package

Square Footage	
Main Level	526 sqft
Bpmus Room	287 sqft
Porches	208 sqft
<b>Total Usable</b>	<b>921 sqft</b>

