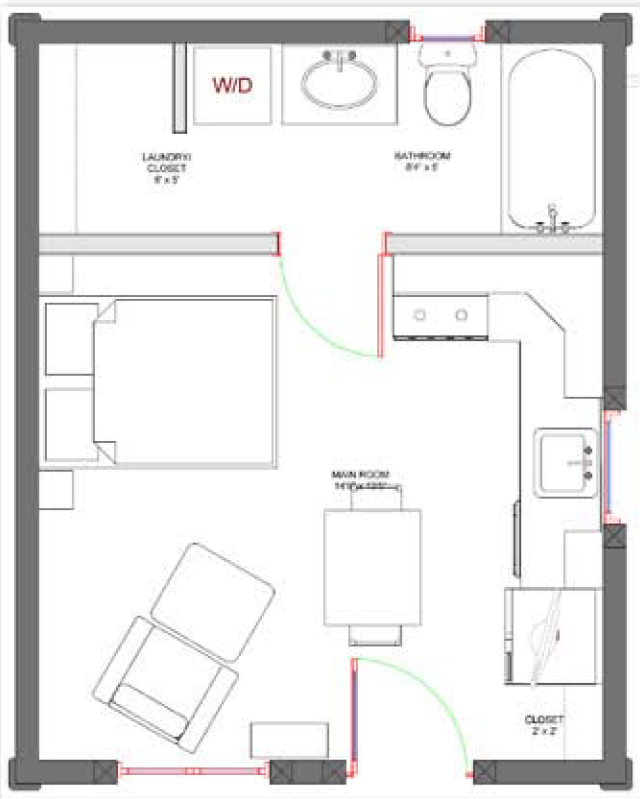




# ALASKAN II



The Alaskan provides a 16' x 20' footprint with 320 square feet of interior living space. A bathroom, kitchenette, closet, storage area, living and sleeping space is comfortably arranged inside. The 8"x8" log walls provide warmth and comfort from searing heat to numbing cold. This cabin is ideal for a weekend getaway or an extended stay. This design is also perfect for:

- Rental units
- Guest cabin
- Mountain retreat
- Man camp
- Lake retreat
- Art studio
- Ski lodge
- Fishing camp
- Hunting camp

Other design features of this cabin include:

- All plumbing exits and enters on the side with no floor penetrations. No skirting needed.
- Bath floor is raised for no freeze plumbing.
- The inherent design of the combination of logs and foam will last a lifetime and hold its value and maintain its durability.
- Constructed on skids so that it can be readily moved for sale or relocated to the hunting or fishing spot of your dreams.
- Small enough to have no or decreased property taxes.
- Metal roof.
- 4' overhang over the front entrance, 2' overhang over the sides.
- Low maintenance vinyl windows.
- 8x8 tongue and groove logs.
- 10" solid foam floor and roof.

**Wyoming Log Home Manufacturing Company**  
(307) 272-4143