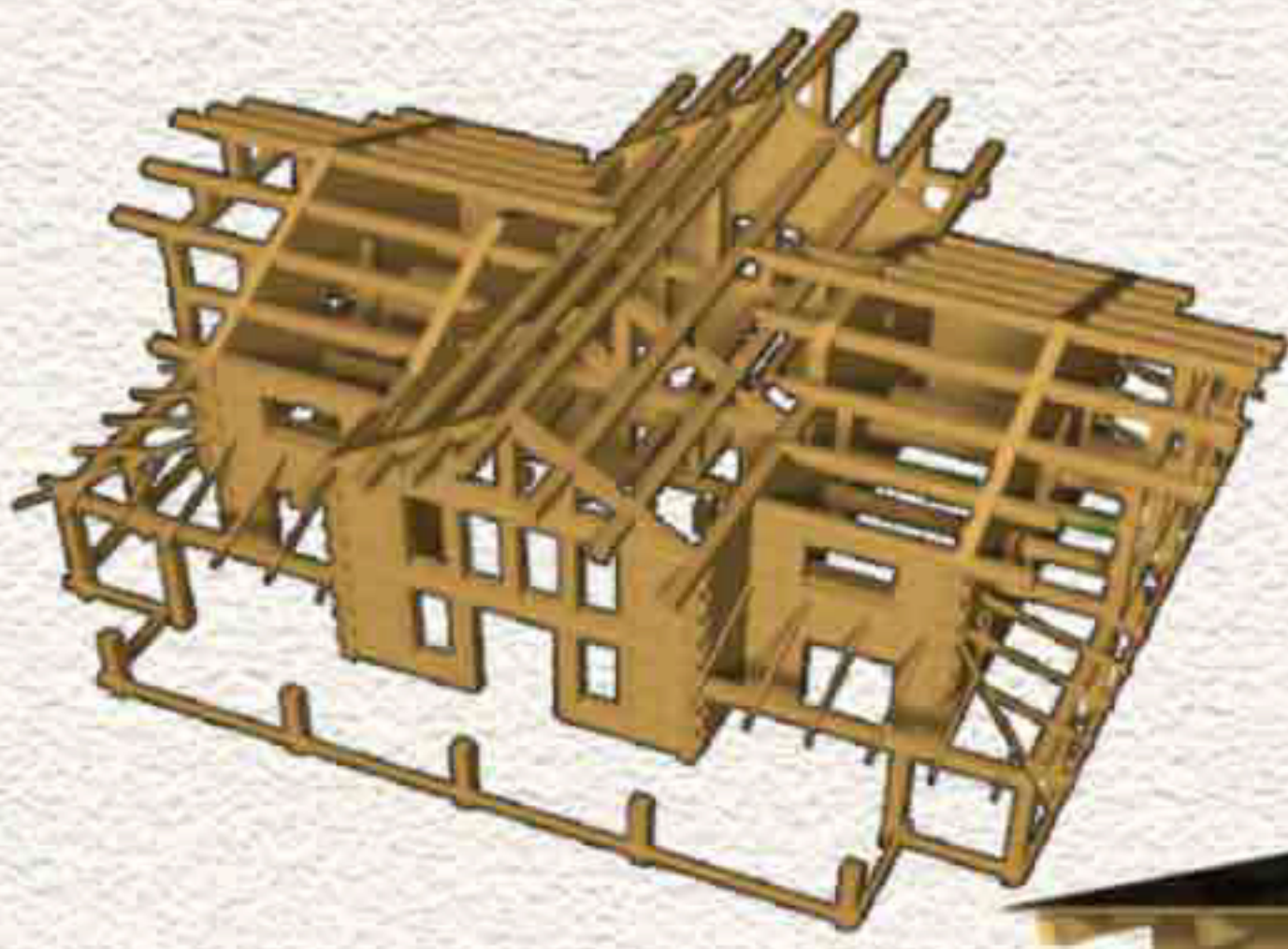


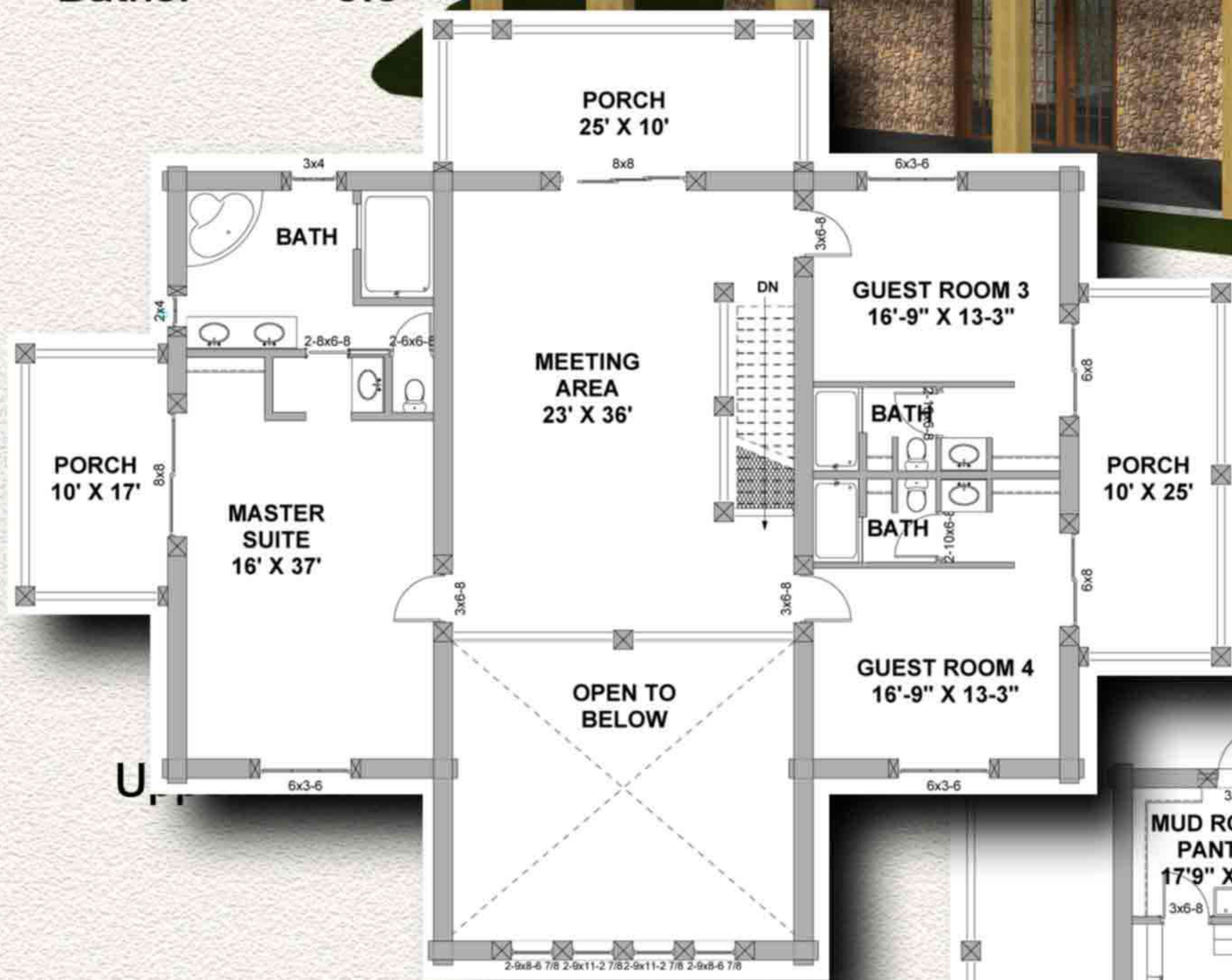
# Wyoming Log Home Manufacturing Company

# The Mountain Resort



## Log Package

Bedrooms: 5  
Baths: 5.5



## Square Footage

Main	2,700	sqft
Upper	2,175	sqft
Basement	2,700	sqft
<b>Total</b>	<b>7,575</b>	<b>sqft</b>
Decks & Balconies	3,270	sqft
<b>Total Usable</b>	<b>10,845</b>	<b>sqft</b>

This expansive five bedroom, 5 1/2 bath, two-level log resort is a dream come true. Downstairs, the commercial kitchen flows into a formal dining room, which then opens up into the great room. A double sided fireplace gives warmth and ambiance to the dining area and the great room. The large entry room gives a formal look to the front entrance along with easy access into the mudroom and half bath. The master bedroom has a large walk-in closet, spacious bath and a sliding door for access onto the porch. Upstairs are two large bedrooms with private baths sharing 250 sq. ft. porch. The loft area joins the bedrooms and overlooks the great room area below. With 2,600 sq. ft. of covered porches on the main level, this lodge is perfect for those who like to entertain clients.

