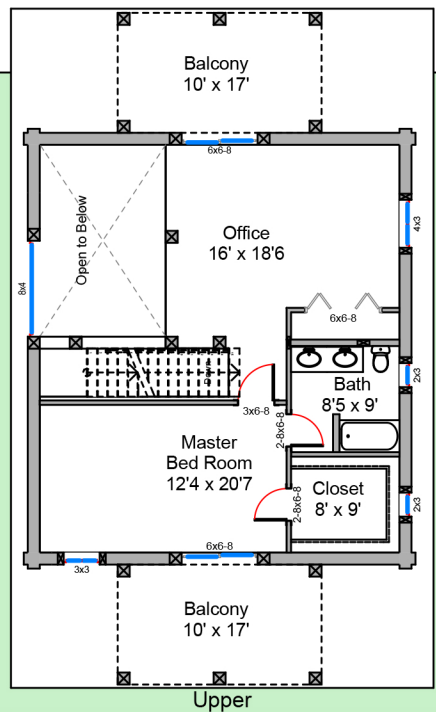
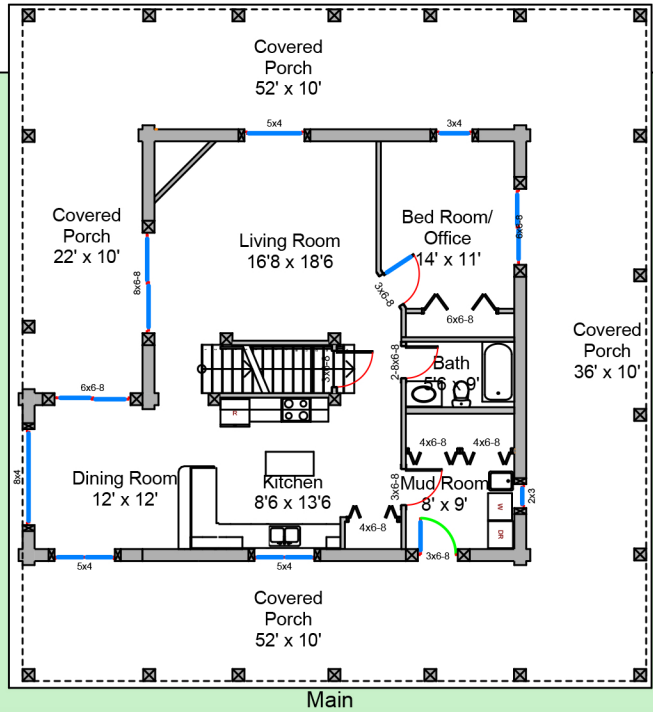


GRAND TETON



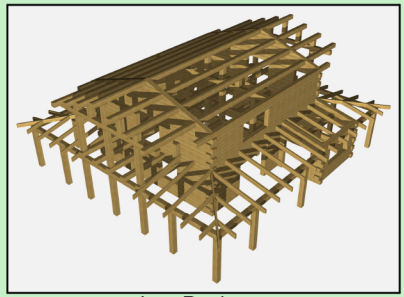
This spacious log cabin is for the smaller family that likes to spread out. The large open floor plan allows for easy visuals from the kitchen, through the dining room and into the living area. There are two bedrooms, baths and 1,960 square feet of wraparound covered porches that almost doubles your living area during the warmer months. Both the loft and upstairs bedroom have 340 square feet of balconies for viewing.



Main Level	1,292 sq ft
Upper Level	895 sq ft
Porches	1,960 sq ft
Total Usable	4,147 sq ft

Beds 2

Baths 2



Log Package